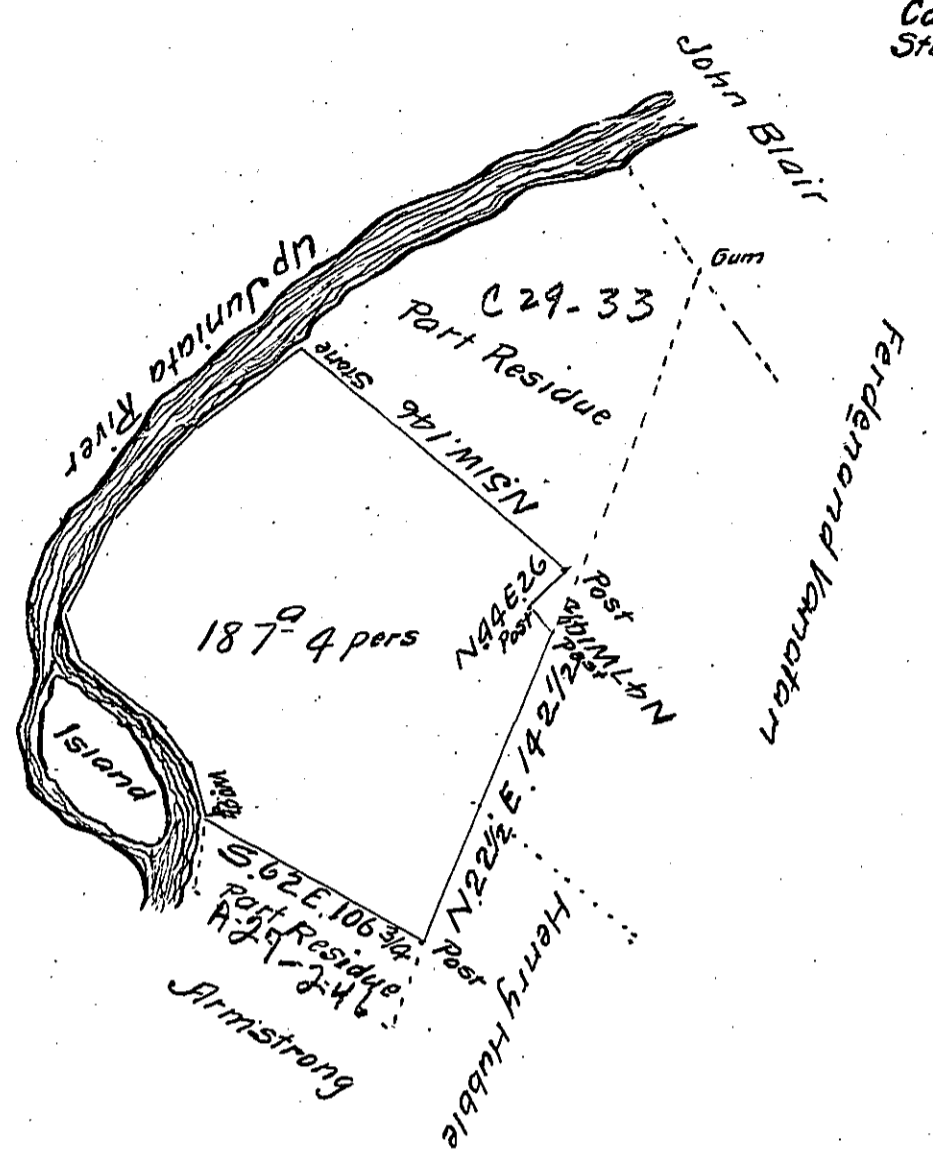


Courses and distances from
Stones up river to FWO
Stones S.55W.58
S.41W.53
S.29W.46
S.14E.19
S.51E.50
S.34E.18
S.18 1/2 E. 24 1/2 W



The Draft of One hundred and eighty seven acres and four perches of land with six per cent for Roads situate in Wayne Township in Mifflin late Cumberland County which is part of a tract of land surveyed 21st November 1765 in pursuance of a warrant to Samuel Brown dated 24th June 1755 said to contain 289 ³/₁₀ acres and now 8th August 1814 resurveyed the above part at the request of David Hartzler and John Hartzler the present owners

Michael M. Monahan

To Richard T. Leech Esquire
Surveyor General of Pennsylvania

IN TESTIMONY that the above is a copy of the original remaining on file in the Department of Internal Affairs of Pennsylvania, made conformably to an Act of Assembly approved the 16th day of February, 1833, I have hereunto set my Hand and caused the Seal of said Department to be affixed at Harrisburg, this Second day of October 1911

Henry Horrell,
Secretary of Internal Affairs.